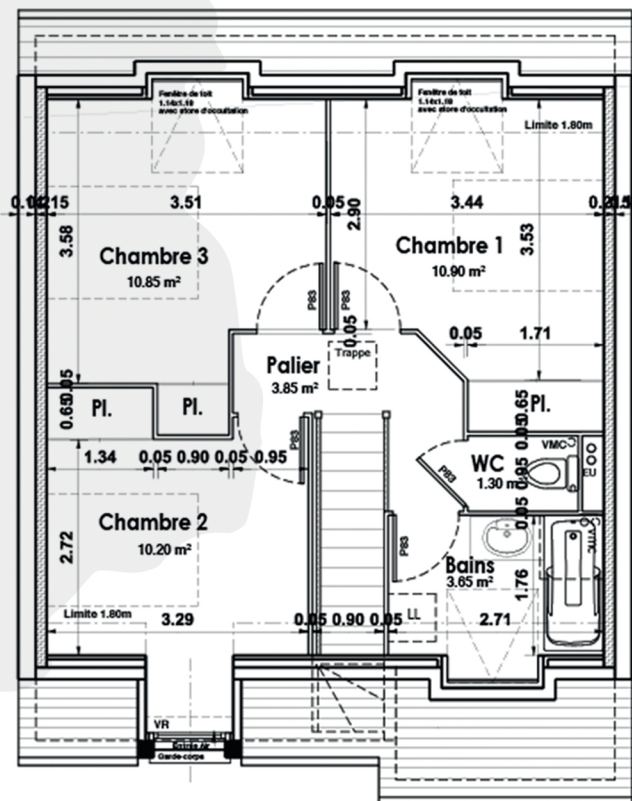
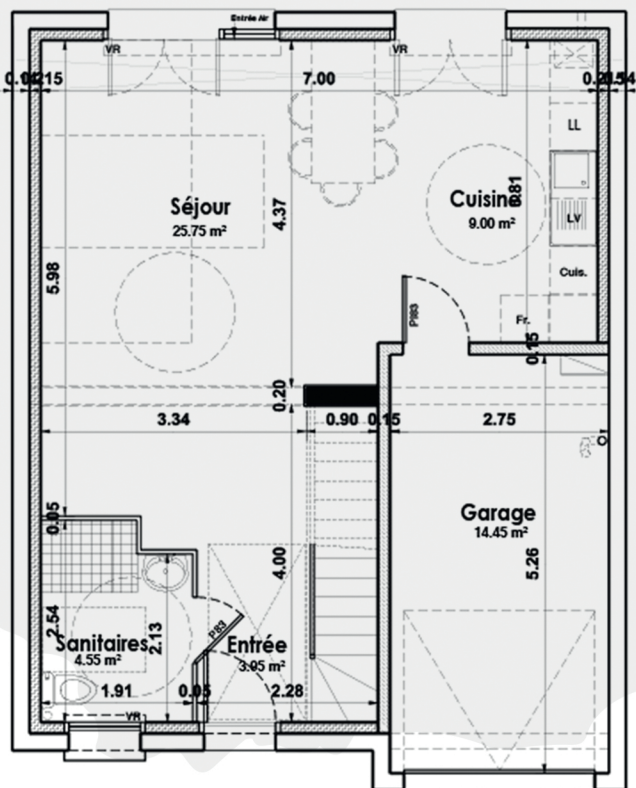




Aménagement
Foncier
& Promotion
Immobilière

La Vallée des Ormes

ORMES (45140)



Type	Lot n°	Surface Habitable	Terrain (m ²)
T4	1	84.00 m ²	287.00 m ²
Rez de Chaussée			
Entrée		3.95 m ²	
Séjour		25.75 m ²	
Cuisine		9.00 m ²	
Sanitaires		4.55 m ²	
Etage			
Chambre 1 + placard		10.90 m ²	
Chambre 2 + placard		10.20 m ²	
Chambre 3 + placard		10.85 m ²	
Salle de Bains		3.65 m ²	
Sanitaires		1.30 m ²	
Palier		3.85 m ²	
SURFACE HABITABLE		84.00 m²	
Surfaces Annexes			
Garage		14.45 m ²	